



SF201 thru SF209

Super Fast Rectifiers
Reverse Voltage 50 to 1000 Volts Forward Current 2.0 Amperes

Features

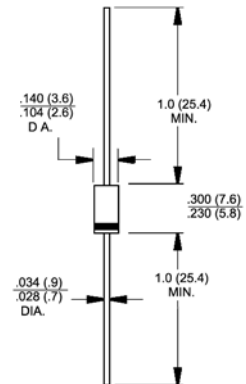
- ◆ Low forward voltage drop
- ◆ High current capability
- ◆ High reliability
- ◆ High surge current capability
- ◆ T_J is 150°C (Max.) and T_{STG} is 175°C (Max.) with PI glue



DO-204AC (DO-15)

Mechanical Data

- ◆ Case: Molded plastic DO-204AC(DO-15)
- ◆ Epoxy: UL 94V-O rate flame retardant
- ◆ Lead: Axial leads, solderable per MIL-STD-202, Method 208 guaranteed
- ◆ Polarity: Color band denotes cathode end
- ◆ High temperature soldering guaranteed:
250°C/10 seconds .375" (9.5mm) lead lengths at 5 lbs., (2.3kg) tension
- ◆ Weight: 0.014 ounce, 0.39 gram



Dimensions in inches and (millimeters)

Maximum Ratings and Electrical Characteristics

Ratings at 25°C ambient temperature unless otherwise specified.

Single phase, half wave, 60Hz, resistive or inductive load.

For capacitive load, derate current by 20%

Parameter	Symbols	SF201	SF202	SF203	SF204	SF205	SF206	SF207	SF208	SF209	Units
Maximum repetitive peak reverse voltage	V_{RRM}	50	100	150	200	300	400	600	800	1000	Volts
Maximum RMS voltage	V_{RMS}	35	70	105	140	210	280	420	560	700	Volts
Maximum DC blocking voltage	V_{DC}	50	100	150	200	300	400	600	800	1000	Volts
Maximum average forward rectified current .375" (9.5mm) lead length @ $T_A=55^\circ\text{C}$	I_{AV}	2.0									Amps
Peak forward surge current, 8.3ms single half sine-wave superimposed on rated load (JEDEC Method)	I_{FSM}	50.0									Amps
Maximum instantaneous forward voltage @ 2.0A	V_F	0.95			1.3		1.7			Volts	
Maximum DC reverse current @ $T_A=25^\circ\text{C}$ at rated DC blocking voltage @ $T_A=100^\circ\text{C}$	I_R					5.0					μA
						100					μA
Maximum reverse recovery time (Note 1)	t_{rr}						35				nS
Typical junction capacitance (Note 2)	C_J	60				30					pF
Operating junction temperature range	T_J	-55 to +125									°C
Storage temperature range	T_{STG}	-55 to +150									°C

- Notes:**
- Reverse Recovery Test Conditions: $I_F=0.5\text{A}$, $I_R=1.0\text{A}$, $I_{RR}=0.25\text{A}$
 - Measured at 1 MHz and Applied Reverse Voltage of 4.0 V D.C.

RATINGS AND CHARACTERISTIC CURVES

FIG. 1- REVERSE RECOVERY TIME CHARACTERISTIC AND TEST CIRCUIT DIAGRAM

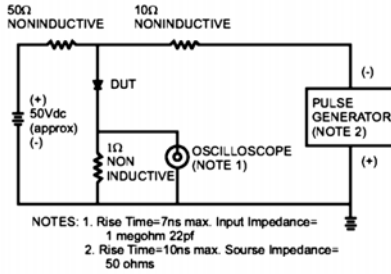


FIG. 2- MAXIMUM AVERAGE FORWARD CURRENT DERATING

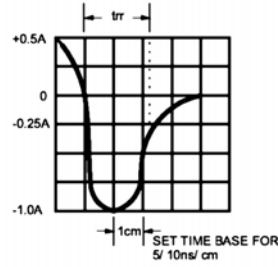
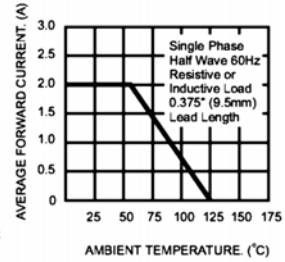


FIG. 3- TYPICAL REVERSE CHARACTERISTICS

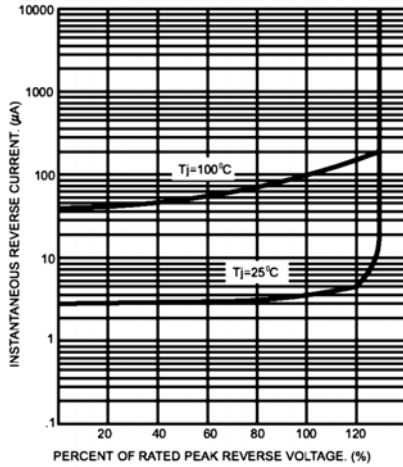


FIG. 4- TYPICAL FORWARD CHARACTERISTICS

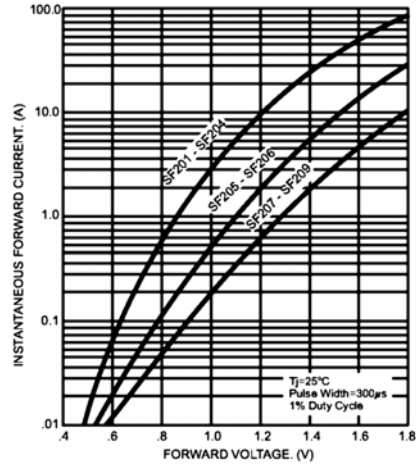


FIG. 5- MAXIMUM NON-REPETITIVE FORWARD SURGE CURRENT

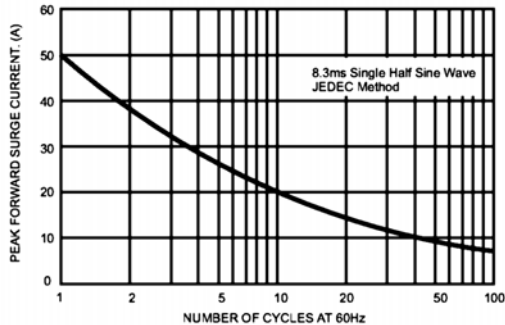


FIG. 6- TYPICAL JUNCTION CAPACITANCE

