



# SF601 thru SF609

Super Fast Rectifiers  
Reverse Voltage 50 to 1000 Volts Forward Current 6.0 Amperes

## Features

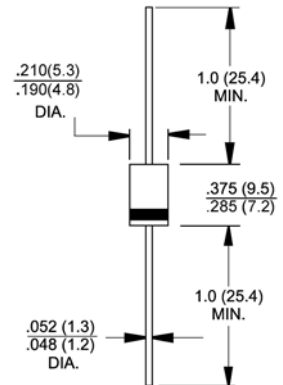
- ◆ Low forward voltage drop
- ◆ High current capability
- ◆ High reliability
- ◆ High surge current capability
- ◆  $T_J$  is 150°C (Max.) and  $T_{STG}$  is 175°C (Max.) with PI glue



DO-201AD

## Mechanical Data

- ◆ Case: Molded plastic DO-201AD
- ◆ Epoxy: UL 94V-O rate flame retardant
- ◆ Lead: Axial leads, solderable per MIL-STD-202, Method 208 guaranteed
- ◆ Polarity: Color band denotes cathode end
- ◆ High temperature soldering guaranteed:  
250°C/10 seconds .375" (9.5mm) lead lengths at 5 lbs., (2.3kg) tension
- ◆ Weight: 0.042 ounce, 1.2 grams



Dimensions in inches and (millimeters)

## Maximum Ratings and Electrical Characteristics

Ratings at 25°C ambient temperature unless otherwise specified.

Single phase, half wave, 60Hz, resistive or inductive load.

For capacitive load, derate current by 20%

Parameter	Symbols	SF601	SF602	SF603	SF604	SF605	SF606	SF607	SF608	SF609	Units	
Maximum repetitive peak reverse voltage	$V_{RRM}$	50	100	150	200	300	400	600	800	1000	Volts	
Maximum RMS voltage	$V_{RMS}$	35	70	105	140	210	280	420	560	700	Volts	
Maximum DC blocking voltage	$V_{DC}$	50	100	150	200	300	400	600	800	1000	Volts	
Maximum average forward rectified current .375" (9.5mm) lead length @ $T_A=55^\circ\text{C}$	$I_{AV}$	6.0									Amps	
Peak forward surge current, 8.3ms single half sine-wave superimposed on rated load (JEDEC Method)	$I_{FSM}$	150.0									Amps	
Maximum instantaneous forward voltage @ 6.0A	$V_F$	0.975			1.3			1.7			Volts	
Maximum DC reverse current @ $T_A=25^\circ\text{C}$ at rated DC blocking voltage @ $T_A=100^\circ\text{C}$	$I_R$	5.0					100					$\mu\text{A}$
Maximum reverse recovery time (Note 1)	$t_{rr}$	35										nS
Typical junction capacitance (Note 2)	$C_J$	115					60					pF
Operating junction temperature range	$T_J$	-55 to +125									°C	
Storage temperature range	$T_{STG}$	-55 to +150									°C	

- Notes:**
- Reverse Recovery Test Conditions:  $I_F=0.5\text{A}$ ,  $I_R=1.0\text{A}$ ,  $I_{RR}=0.25\text{A}$
  - Measured at 1 MHz and Applied Reverse Voltage of 4.0 V D.C.

# RATINGS AND CHARACTERISTIC CURVES

FIG. 1- REVERSE RECOVERY TIME CHARACTERISTIC AND TEST CIRCUIT DIAGRAM

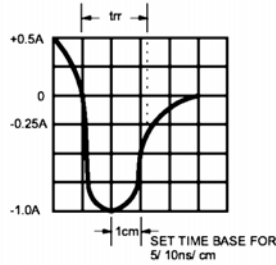
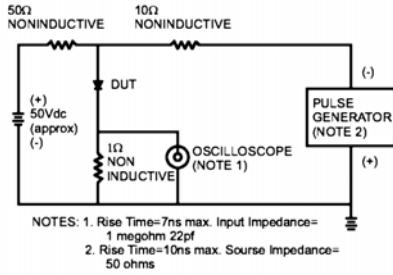


FIG. 2- MAXIMUM AVERAGE FORWARD CURRENT DERATING

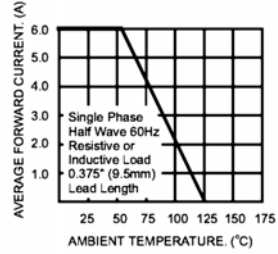


FIG. 3- TYPICAL REVERSE CHARACTERISTICS

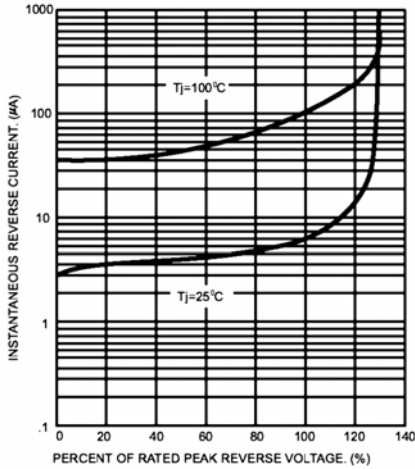


FIG. 4- TYPICAL FORWARD CHARACTERISTICS

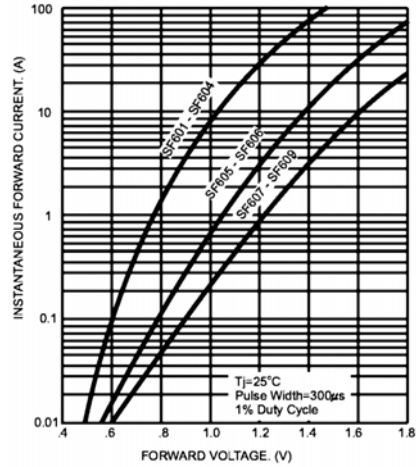


FIG. 5- MAXIMUM NON-REPETITIVE FORWARD SURGE CURRENT

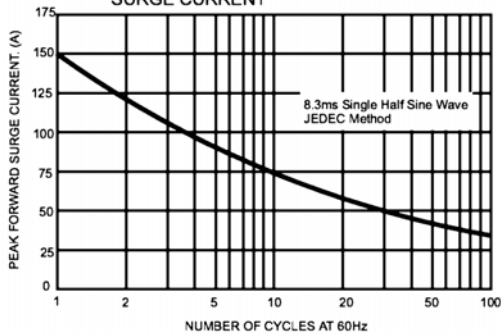


FIG. 6- TYPICAL JUNCTION CAPACITANCE

