

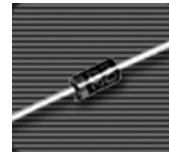


# FR101G thru FR107G

Glass Passivated Fast Recovery Rectifiers  
Reverse Voltage 50 to 1000 Volts Forward Current 1.0 Ampere

## Features

- ◆ Low forward voltage drop
- ◆ High current capability
- ◆ High reliability
- ◆ High surge current capability

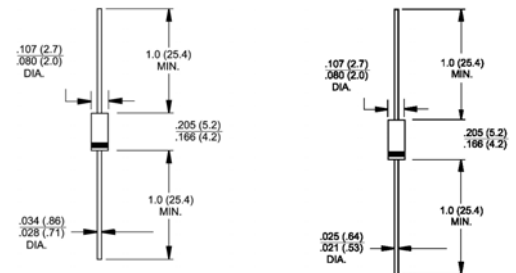


DO-204AL (DO-41)

A-405

## Mechanical Data

- ◆ Case: Molded plastic DO-204AL (DO-41)/A-405
- ◆ Epoxy: UL 94V-O rate flame retardant
- ◆ Lead: Axial leads, solderable per MIL-STD-202, Method 208 guaranteed
- ◆ Polarity: Color band denotes cathode end
- ◆ High temperature soldering guaranteed:  
250°C/10 seconds .375" (9.5mm) lead lengths at 5 lbs., (2.3kg) tension
- ◆ Weight: DO-41 - 0.012 ounce, 0.335 gram  
A-405 - 0.008 ounce, 0.235 gram



Dimensions in inches and (millimeters)      Dimensions in inches and (millimeters)

**Note:** Lead diameter is 0.025(0.64)/0.021(0.53) for part numbers from FR101SG thru FR107SG

## Maximum Ratings and Electrical Characteristics

Ratings at 25°C ambient temperature unless otherwise specified.

Single phase, half wave, 60Hz, resistive or inductive load.

For capacitive load, derate current by 20%

Parameter	Symbols	FR101G	FR102G	FR103G	FR104G	FR105G	FR106G	FR107G	Units
Maximum repetitive peak reverse voltage	$V_{RRM}$	50	100	200	400	600	800	1000	Volts
Maximum RMS voltage	$V_{RMS}$	35	70	140	280	420	560	700	Volts
Maximum DC blocking voltage	$V_{DC}$	50	100	200	400	600	800	1000	Volts
Maximum average forward rectified current 0.375" (9.5mm) lead length at $T_A=55^\circ\text{C}$	$I_{(AV)}$	1.0							Amp
Peak forward surge current, 8.3 ms single half sine-wave superimposed on rated load (JEDEC Method)	$I_{FSM}$	30.0							Amps
Maximum instantaneous forward voltage @ 1.0A	$V_F$	1.3							Volts
Maximum DC reverse current at rated DC blocking voltage @ $T_A=25^\circ\text{C}$ @ $T_A=125^\circ\text{C}$	$I_R$	5.0 100							$\mu\text{A}$
Maximum reverse recovery time (Note 1)	$t_{tr}$	150			250		500		nS
Typical junction capacitance (Note 2)	$C_J$	12							pF
Operating junction temperature range	$T_J$	-55 to +150							$^\circ\text{C}$
Storage temperature range	$T_{STG}$	-55 to +150							$^\circ\text{C}$

- Notes:**
1. Reverse Recovery Test Conditions:  $I_F=0.5\text{A}$ ,  $I_R=1.0\text{A}$ ,  $I_{RR}=0.25\text{A}$
  2. Measured at 1 MHz and Applied Reverse Voltage of 4.0 V D.C.

# RATINGS AND CHARACTERISTIC CURVES

FIG.1- REVERSE RECOVERY TIME CHARACTERISTIC AND TEST CIRCUIT DIAGRAM

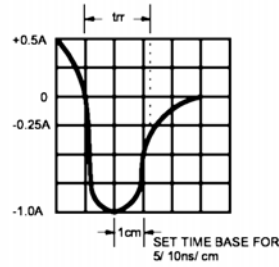
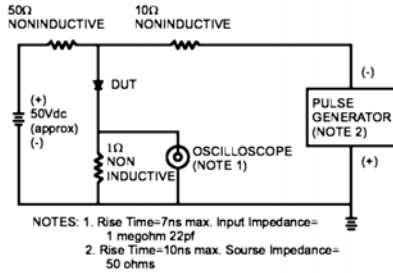


FIG.2- MAXIMUM FORWARD CURRENT DERATING CURVE

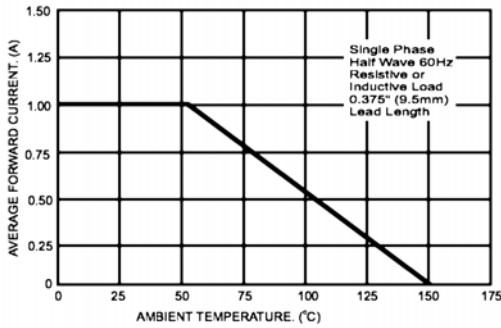


FIG.3- MAXIMUM NON-REPETITIVE FORWARD SURGE CURRENT

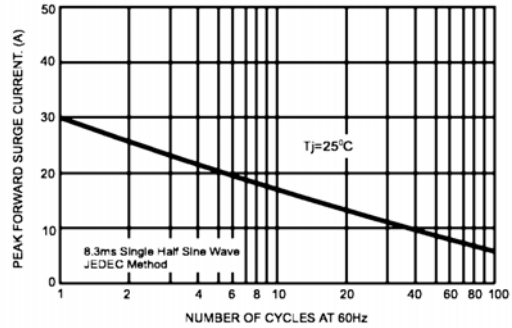


FIG.4- TYPICAL JUNCTION CAPACITANCE

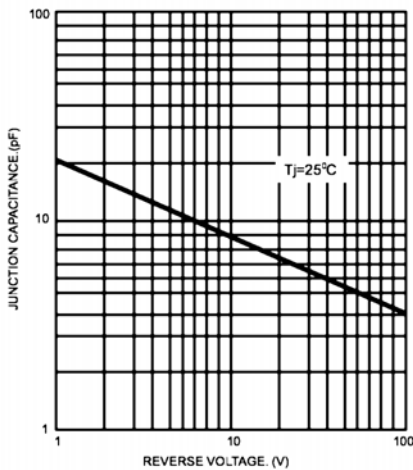


FIG.5- TYPICAL FORWARD CHARACTERISTICS

